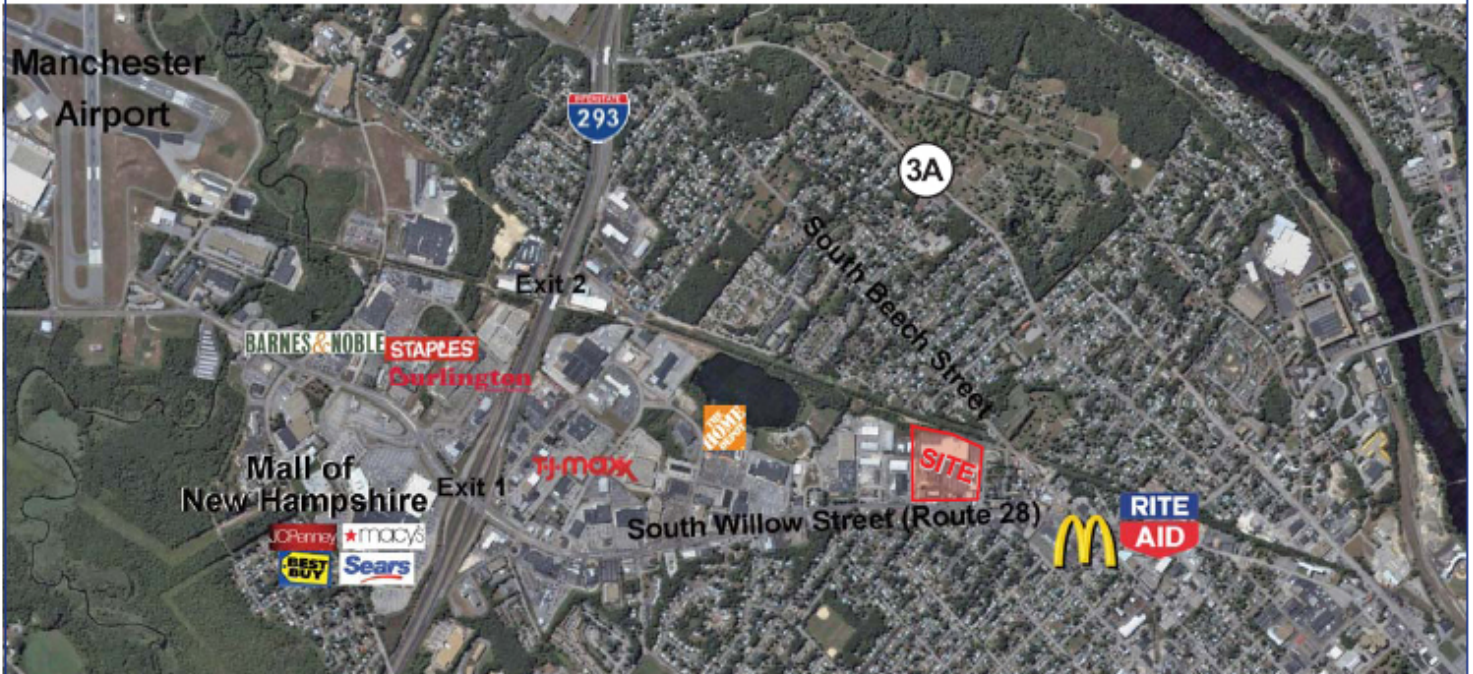


MANCHESTER, NH

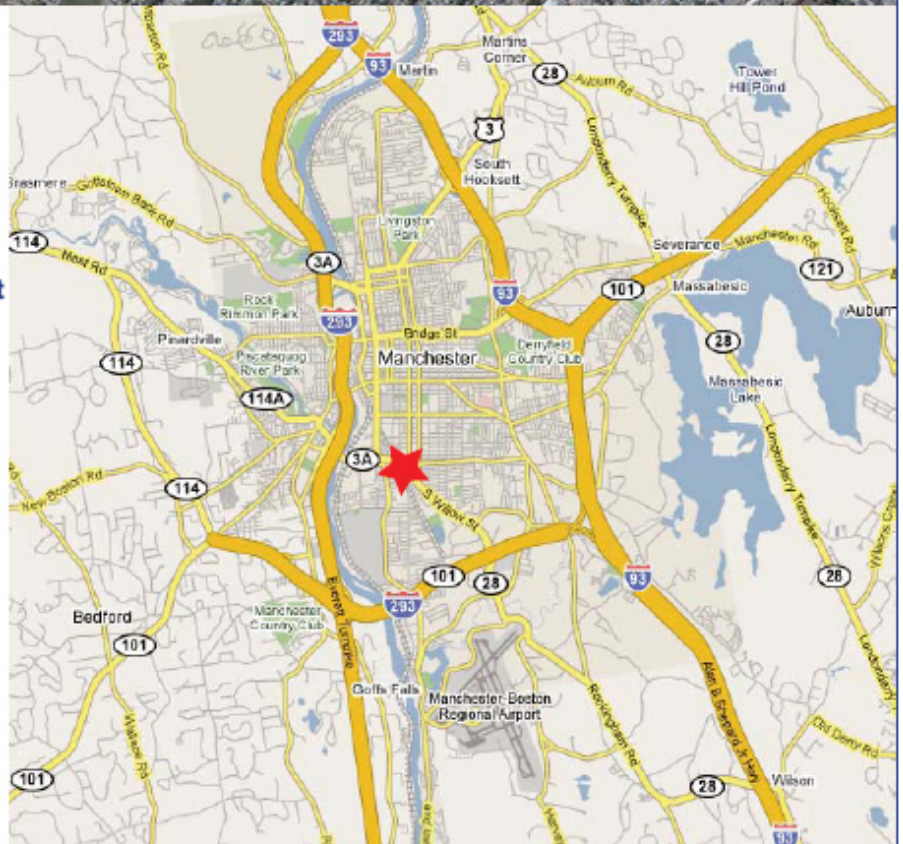
Manchester Commons

375 South Willow Street

Retail • Office • Service: 1,000 SF - 25,000 SF



- Premier 170,000 SF shopping center anchored by a 70,000 SF Shaw's Supermarket
- 13 acre shopping center located on South Willow Street, a major four lane road with access to South Beech Street
- Average daily traffic count of 43,000 cars per day on South Willow Street
- Retailers in the center include Shaw's, Fast Frame, UPS Store, N.H. Dept. of Motor Vehicles, Fantastic Sam's, and many other local tenants
- Major retailers in the area include TJ Maxx, Staples, Barnes & Noble, Home Depot, and the Mall of New Hampshire which includes many national retailers



Mark Thibeault • mthibeault@atsrealty.com • 802.879.1410

1601 Trapelo Road, Suite 250 • Waltham, MA 02451 • Phone 781.672.0200 • Fax 781.672.0277 • www.atsrealty.com

Information presented herein is from sources deemed reliable. However, no warranty can be made as to the accuracy of this information, which is presented subject to prior sale, rental, or withdrawal from the market without notice.

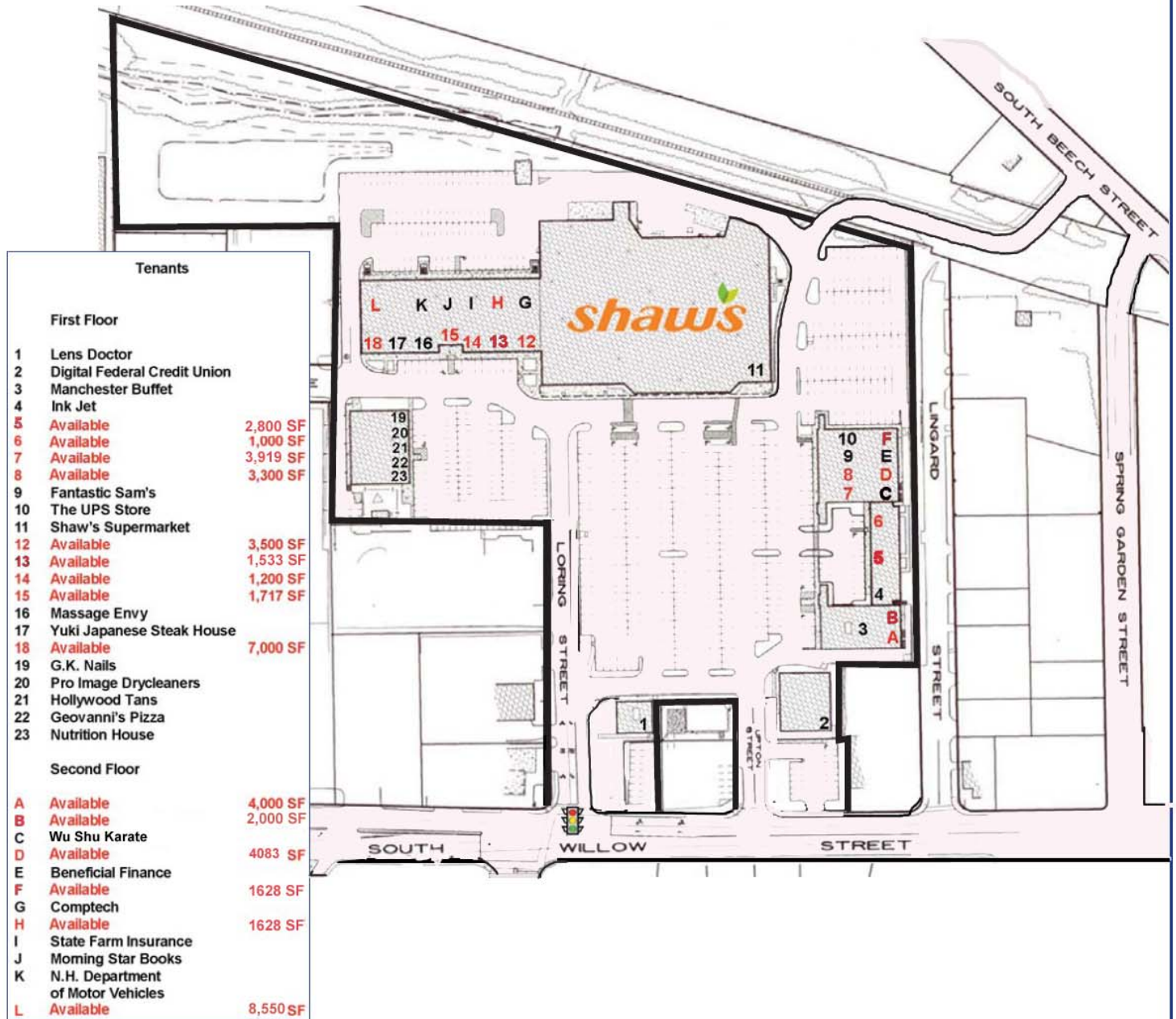
ATS
▲ ■ ●
REALTY

MANCHESTER, NH

Manchester Commons

375 South Willow Street

Retail • Office • Service: 1,000 SF - 25,000 SF



● Population

1 mile	18,088
3 mile	98,344
5 mile	147,517

● Households

1 mile	7,296
3 mile	40,975
5 mile	60,430

● Avg. HH Income

1 mile	\$52,572
3 mile	\$57,515
5 mile	\$66,321

● Daytime Population

1 mile	9,667
3 mile	69,760
5 mile	88,364

Mark Thibeault • mthibeault@atsrealty.com • 802.879.1410



1601 Trapelo Road, Suite 250 • Waltham, MA 02451 • Phone 781.672.0200 • Fax 781.672.0277 • www.atsrealty.com

Information presented herein is from sources deemed reliable. However, no warranty can be made as to the accuracy of this information, which is presented subject to prior sale, rental, or withdrawal from the market without notice.